

# Home Steam Shower Kit



[Material list](#)

# Material list

\*GB5000000 (left-hand door) GB5000001 (right-hand door)

## Component

## Quantity

## Product Description

Shower Tray	1
Drainage	1
Drain support	1
Channel Cover	1
Wall & Ceiling boards for steam area	5
	2
Seamless design panel for the ceiling	1
Bench	1
Niche 20/40	1
Outer Wall boards (bathroom faced)	3
Edge strip	1
Glass door	1
Steam generator	1
Lights	2
Vapour sealant for joints	19
Joint sealing tape (fleece)	1
Corner sealing tape (preformed fleece)	8
Sealing collar for lights	2
Sealing collar for iBox	1
Sealing collar for shower outlets	2
Mechanical fixings	1
Joint adhesive sealant	7
Joint reinforcement tape (mesh)	1
Fixing set/patress plates	1
*Heart dispersion plate	1

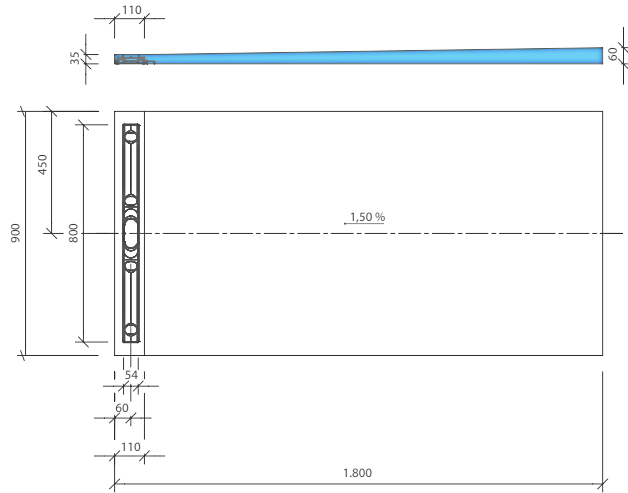
wedi Fundo <a href="#">Riolito Neo</a> 1800 x 900 x 60mm, 800mm channel
wedi Fundo <a href="#">channel drain, horizontal DN50</a>
wedi Fundo channel drain substructure element
wedi Fundo channel cover, 800mm standard plus (incl. channel frame)
wedi Vapor 85 building board, 2500 x 900 x 20mm
wedi Vapor 85 building board, 2500 x 600 x 20mm
wedi Top Wall 2500 x 900 x 6mm, stone grey (natural stone look)
wedi <a href="#">Sanoasa bench 3</a> , rounded edge, 900m width
wedi <a href="#">Sanwell niche</a> , internal dimensions 234x434x70mm, frame flange 12.5mm
wedi building boards, 2500 x 625 x 12.5mm
wedi Tools edge strip, 1800 x 100 x 40mm
*Steam door, AU LUX 8x20 - <i>different product code for left- and right-hand doors (see above)</i>
Harvia Steam generator HGX45 3KW
Luceco down light LED, IP65 rated
wedi 620 sealant, 290ml/tube
wedi Tools sealing tape, 50m x 120mm x 1mm
wedi Tools sealing corner, inside, 120 x 120 x 60mm
wedi Tools sealing gaiter, 50-75mm
wedi Tools sealing gaiter 90-125mm
wedi Tools sealing gaiter 10-24mm
wedi Tools washers Ø 35mm, stainless steel (box of 100pcs)
wedi 610 adhesive sealant, 310ml/tube
wedi Tools Joint reinforcement tape, 25m x 125mm, self-adhesive
wedi Tools fixings set, composite material (14pcs)
Promat heat plate 150 x 150 x 12mm

**NOT INCLUDED IN THE KIT:** brassware, silicone sealant, tile adhesive  
\*suitable epoxy resin sealant & grout is required for installation

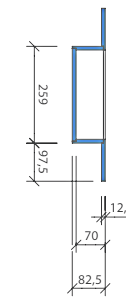
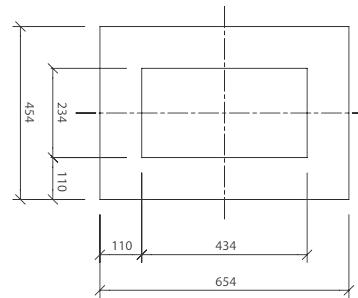
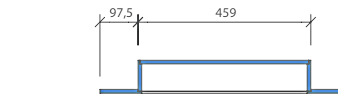
Total **£6296.00**



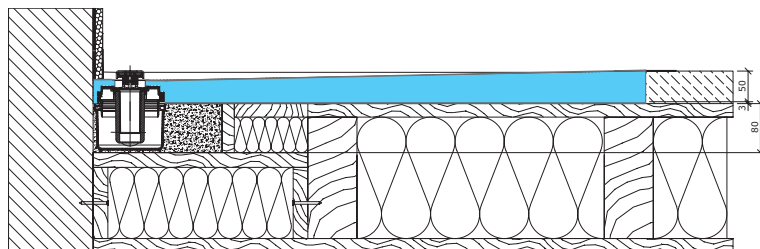
# Standard component drawings



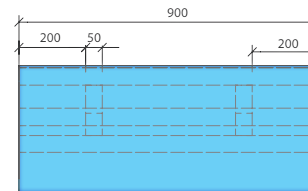
Riolito Neo shower element



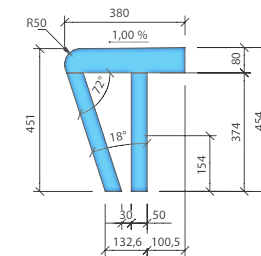
Sanwell niche 20/40, 70mm deep



Channel drain, horizontal DN50 in timber



Sanoasa bench 3, rounded edge



# Material list

## Interchangeable components

	Extra cost
Tileable channel cover	FREE
Straight bench	FREE
Angled bench	FREE
Floating bench	FREE
Seamless design surface for ceiling in diff. colour	FREE
Niche 30/60	FREE

## Extra components

	Additional Cost
Seamless, preformed surface for the shower tray + adhesive sealant for installation	£465.78
Seamless, preformed surface for the rounded bench + adhesive sealant for installation	£622.65
Seamless preformed surface for the niche + adhesive sealant for installation	£459.53
Seamless design panel for walls + adhesive sealant for installation	£3910.36

\*swap to a larger niche is a must when adding a seamless, preformed Sanwell Top surface

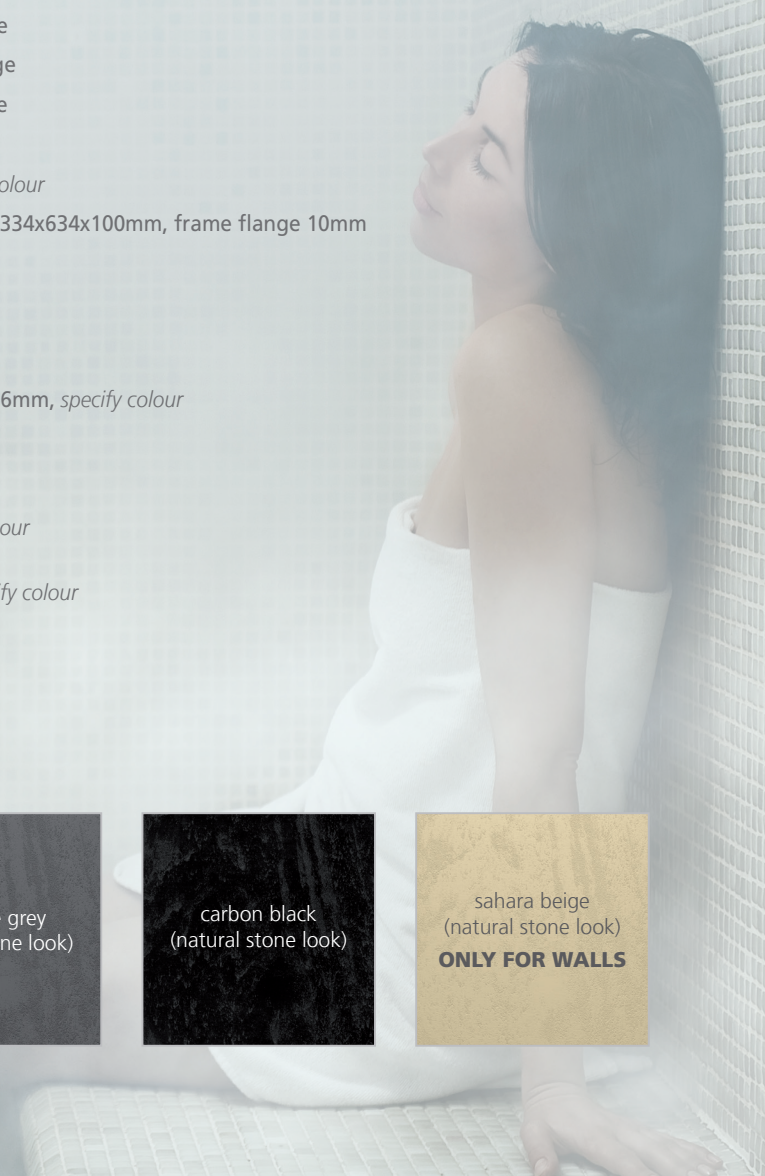
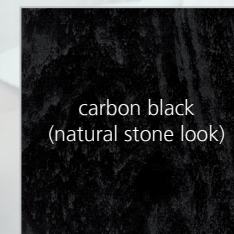
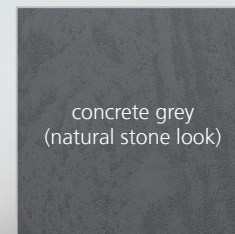
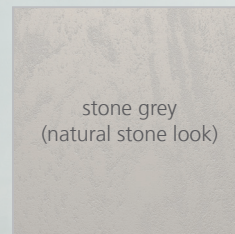
## Description

wedi Fundo channel cover, 800mm tileable  
wedi Fundo [Sanoasa bench 1](#), straight edge  
wedi Fundo [Sanoasa bench 2](#), angled edge  
wedi Fundo [Sanoasa bench 4](#), floating  
wedi Top Wall 2500 x 900 x 6mm, *specify colour*  
\*wedi [Sanwell niche](#), internal dimensions 334x634x100mm, frame flange 10mm

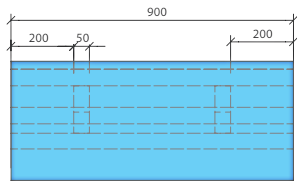
## Description

wedi Fundo Top, Riolito Neo 1800 x 900 x 6mm, *specify colour*  
+ 3 tubes of wedi 610 adhesive sealant  
wedi Sanoasa Top, bench 3, *specify colour*  
+ 2 tubes of wedi 610 adhesive sealant  
\*wedi Sanwell Top, niche 30/60, *specify colour*  
+ 1 tube of wedi 610 adhesive sealant  
6 x wedi Top Wall 2500 x 900 x 6mm, *specify colour*  
+ 9 tubes of wedi 610 adhesive sealant

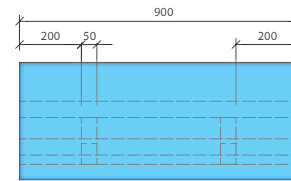
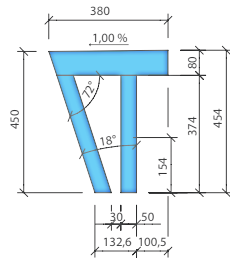
**Total £5458.32**



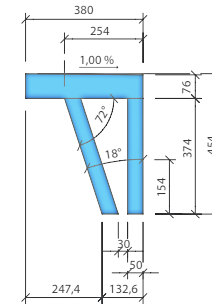
# Interchangeable component drawings



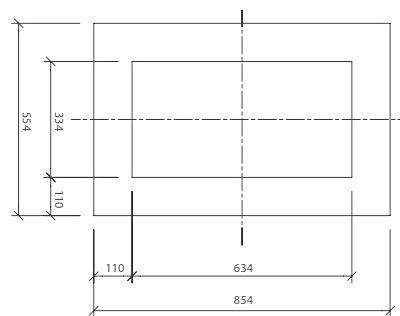
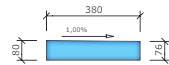
Sanoasa bench 2, angled edge



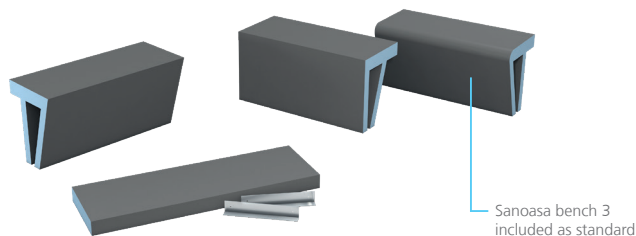
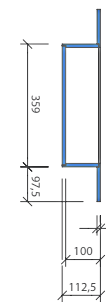
Sanoasa bench 1, straight edge



Sanoasa bench 4, floating



Sanwell niche 30/60, 100mm deep





## WARRANTY REGISTRATION

Register your installation: please provide the following information in order for your warranty to be activated on every component.

- ✓ Date of completion
- ✓ Name of the Installer (person's & company's)
- ✓ Project name / reference
- ✓ Site address
- ✓ Full contact details (email, phone number & address)
- ✓ Place & date of purchase (including order number)

EMAIL: [info@wedi.co.uk](mailto:info@wedi.co.uk)

Warranty terms are subject to registration and must be activated immediately upon completion of the installation.



All reasonable care has been taken in the preparation of this brochure, all information, statistics and illustrations are intended for guidance only. All details are nominal, wedi Systems UK may modify or change the information, products or specifications in future. All rights reserved. Copyright in this publication belongs to wedi Systems UK Ltd. and such copyright may not be used, sold, copied or reproduced in whole or part in any manner in any media to any person without prior consent. Information within is correct at the date of printing in November 2023.



wedi Systems (UK) Ltd

Unit 4 Mercury Park

Mercury Way

Trafford Park

M41 7LY

Phone: 0161 864 2336

Email: [info@wedi.co.uk](mailto:info@wedi.co.uk)

