

Grand Duo Home Steam Shower Kit



[Material list](#)

Material list

*GB5000005 (left-hand door) GB5000004 (right-hand door)

Component

Quantity

Product Description

Shower Tray	1
Drainage	1
Drain support	1
Tray extension	2
Wall & Ceiling boards for steam area	3
	7
Seamless design panel for the ceiling	1
Bench	2
Niche 20/40	1
Outer Wall boards (bathroom faced)	3
Edge strip	1
Glass door	1
Steam generator	1
Lights	2
Vapour sealant for joints	22
Joint sealing tape (fleece)	1
Corner sealing tape (preformed fleece)	8
Sealing collar for lights	2
Sealing collar for iBox	1
Sealing collar for shower outlets	2
Mechanical fixings	2
Joint adhesive sealant	10
Joint reinforcement tape (mesh)	1
Fixing set/patress plates	1
*Heart dispersion plate	1

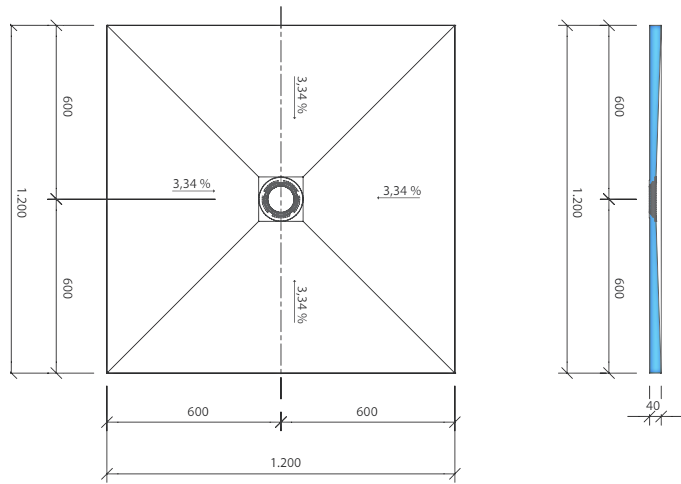
wedi Fundo Primo 1200 x 1200 x 40mm, central drain
wedi Fundo point drain, horizontal DN50 including standard stainless steel drain cover
wedi Fundo point drain substructure element
wedi Fundo sloping board , 600x1200x40/46mm
wedi Vapor 85 building board, 2500 x 900 x 20mm
wedi Vapor 85 building board, 2500 x 600 x 20mm
wedi Top Wall 2500 x 900 x 6mm, stone grey (natural stone look)
wedi Sanoasa bench 4 , cantilevered, 1200x380x80mm
wedi Sanwell niche , internal dimensions 234x434x70mm, frame flange 12.5mm
wedi building boards, 2500 x 625 x 12.5mm
wedi Tools edge strip, 1800 x 100 x 40mm
*Steam door, AU LUX 8x20 - <i>different product code for left- and right-hand doors (see above)</i>
Harvia Steam generator HGX45 3KW
Luceco down light LED, IP65 rated
wedi 620 sealant, 290ml/tube
wedi Tools sealing tape, 50m x 120mm x 1mm
wedi Tools sealing corner, inside, 120 x 120 x 60mm
wedi Tools sealing gaiter, 50-75mm
wedi Tools sealing gaiter 90-125mm
wedi Tools sealing gaiter 10-24mm
wedi Tools washers Ø 35mm, stainless steel (box of 100pcs)
wedi 610 adhesive sealant, 310ml/tube
wedi Tools Joint reinforcement tape, 25m x 125mm, self-adhesive
wedi Tools fixings set, composite material (14pcs)
Promat heat plate 150 x 150 x 12mm

NOT INCLUDED IN THE KIT: brassware, silicone sealant, tile adhesive
*suitable epoxy resin sealant and grout is required for installation

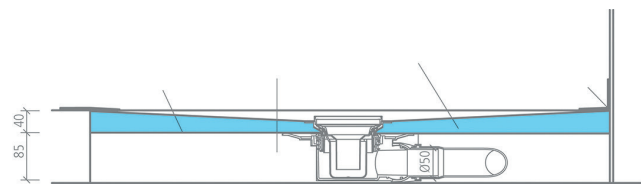
Total **£6549.00**



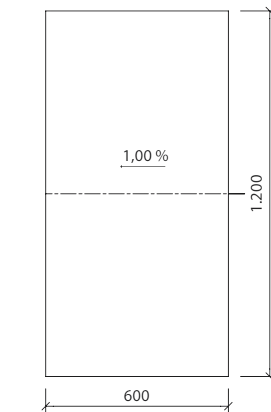
Standard component drawings



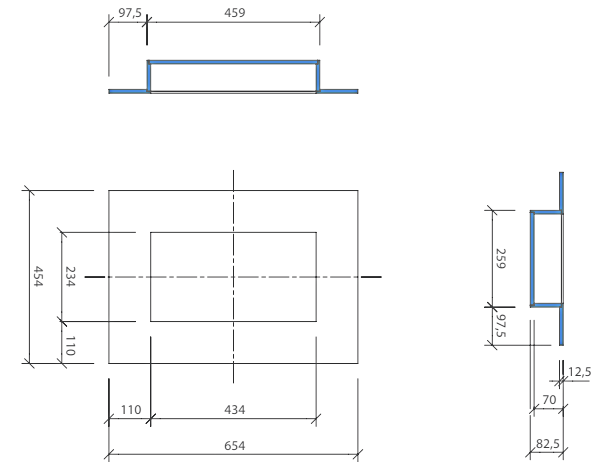
Primo shower element



Point drain, horizontal DN50



Fundo Sloping board 40/46



Sanwell niche 20/40, 70mm deep



Sanoasa bench 4, cantilevered

Material list

Interchangeable components

Straight bench	FREE
Angled bench	FREE
Floating bench	FREE
Seamless design surface for ceiling in diff. colour	FREE
Niche 30/60	FREE

Extra cost

Description

wedi Fundo [Sanoasa bench 1](#), straight edge
wedi Fundo [Sanoasa bench 2](#), angled edge
wedi Fundo [Sanoasa bench 3](#), rounded edge
wedi Top Wall 2500 x 900 x 6mm, *specify colour*
*wedi [Sanwell niche](#), internal dimensions 334x634x100mm, frame flange 10mm

Extra components

Seamless preformed surface for the niche + adhesive sealant for installation	£459.53
Seamless design panel for walls + adhesive sealant for installation	£3829.94

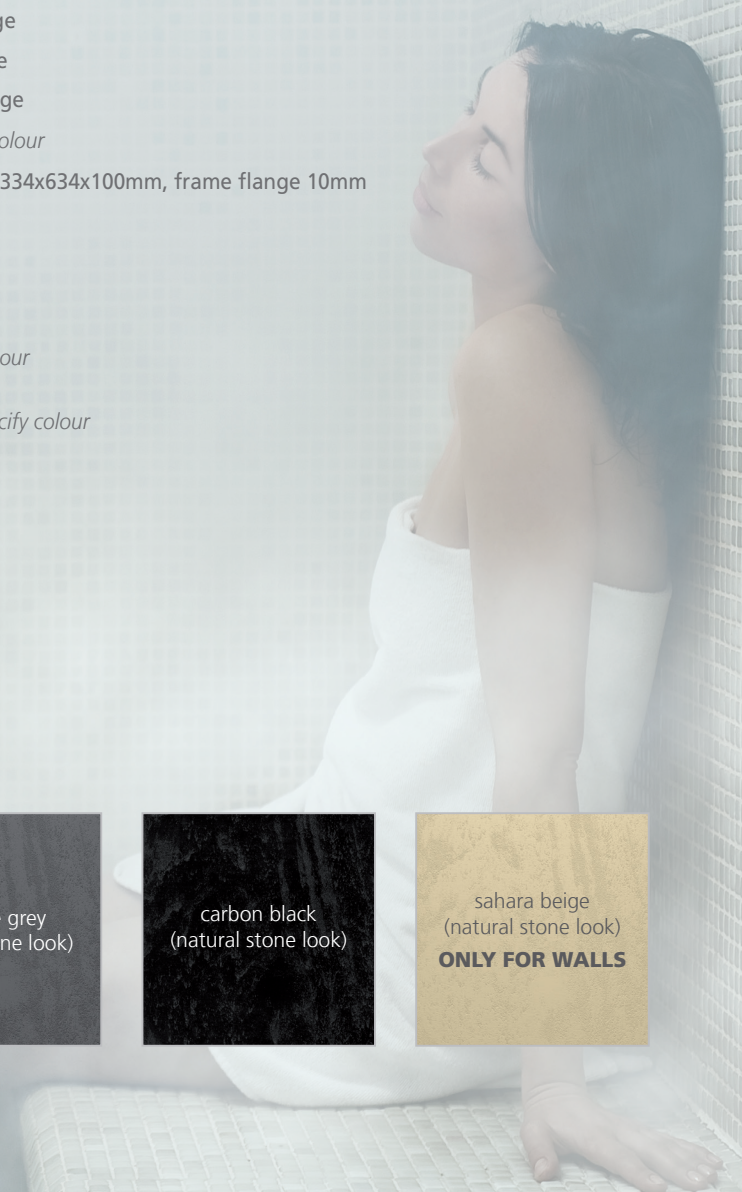
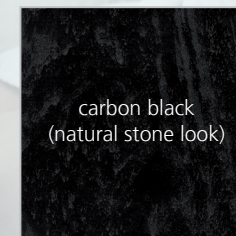
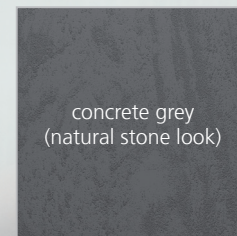
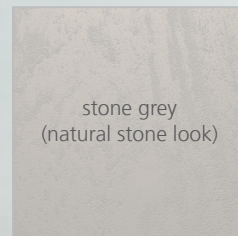
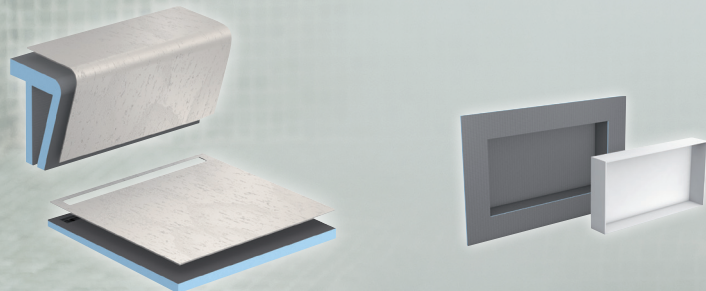
Additional Cost

Description

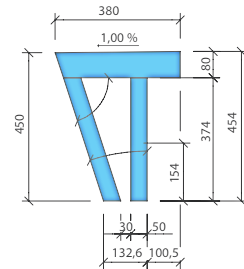
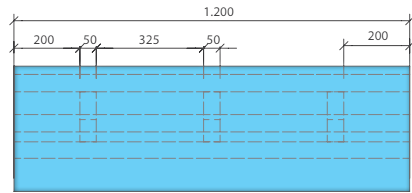
*wedi Sanwell Top, niche 30/60, *specify colour*
+ 1 tube of wedi 610 adhesive sealant
5 x wedi Top Wall 2500 x 1200 x 6mm, *specify colour*
+ 9 tubes of wedi 610 adhesive sealant

*swap to a larger niche is a must when adding a seamless, preformed Sanwell Top surface

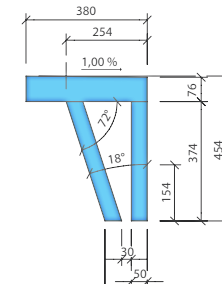
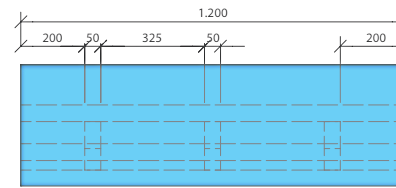
Total £4289.47



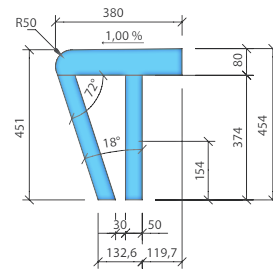
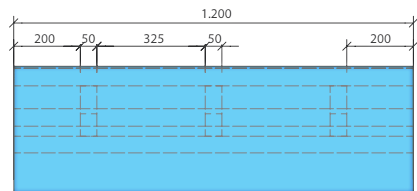
Interchangeable component drawings



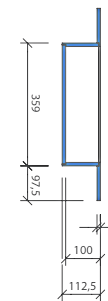
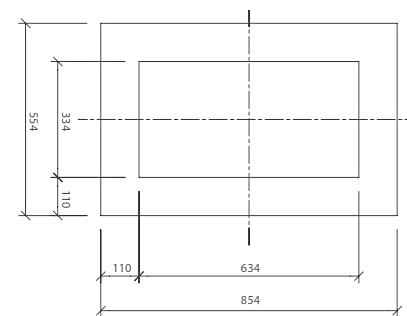
Sanoasa bench 2, angled edge



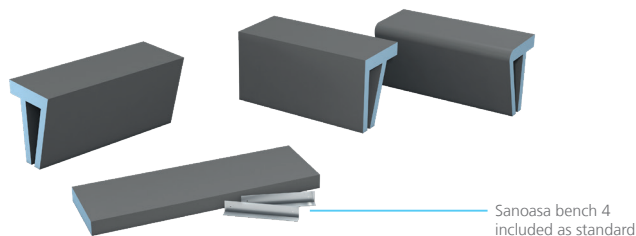
Sanoasa bench 1, straight edge



Sanoasa bench 3, rounded edge



Sanwell niche 30/60, 100mm deep



Sanoasa bench 4 included as standard



WARRANTY REGISTRATION

Register your installation: please provide the following information in order for your warranty to be activated on every component.

- ✓ Date of completion
- ✓ Name of the Installer (person's & company's)
- ✓ Project name / reference
- ✓ Site address
- ✓ Full contact details (email, phone number & address)
- ✓ Place & date of purchase (including order number)

EMAIL: info@wedi.co.uk

Warranty terms are subject to registration and must be activated immediately upon completion of the installation.



All reasonable care has been taken in the preparation of this brochure, all information, statistics and illustrations are intended for guidance only. All details are nominal, wedi Systems UK may modify or change the information, products or specifications in future. All rights reserved. Copyright in this publication belongs to wedi Systems UK Ltd. and such copyright may not be used, sold, copied or reproduced in whole or part in any manner in any media to any person without prior consent. Information within is correct at the date of printing in November 2023.



wedi Systems (UK) Ltd

Unit 4 Mercury Park

Mercury Way

Trafford Park

M41 7LY

Phone: 0161 864 2336

Email: info@wedi.co.uk

