

Grand Duo Home Steam Shower Kit



Installation guide

Wellbeing begins at home

Introduction

Thank you for your purchase.

Please read this manual thoroughly to ensure that you get the best out of your steam shower installation.

Care and professionalism put into the installation will reflect the quality of the finished product. Therefore, it is strongly recommended that this kit is installed by a person or company experienced in steam room installations.

Once your steam shower is tiled and operational, just sit back, relax and enjoy the unique wedi experience usually reserved for spa and wellness facilities of the most prestigious health clubs and hotels.

Contents

Introduction & Steam room safety	Page 2-3
What is in the kit	Page 4-5
Basics: wedi steam room design	Page 6-7
Installation steps	Page 8-9
Warranty registration	Page 10



Relax the mind
Renew the body
Revive the soul

WARNING

This product is for indoor, domestic use ONLY

The steam generator unit must be located as to allow access for maintenance and servicing.

Do not install the steam outlet pipe where the steam spray may come into direct contact with the user. For example this should not be positioned in close proximity of a bench / seat, by the entrance, or in any location where it may presents a scald hazard.

The steam outlet pipe and all other penetrations into the steam room must be adequately vapour sealed in order to avoid damage caused by moisture leakage into the wall or surrounding structure.

Do not allow the steam outlet pipe or nozzle to touch wedi materials or any other materials that are not rated for 100°C or higher. Doing so may result in damage to these materials and compromise the waterproof integrity of the Steam Shower.

Steam room safety

Please read before using the steam shower

Suitability

The steam room should not be used by anyone who:

- is pregnant
- suffers from high or low blood pressure, heart disease, circulatory problems, diabetes, kidney disease or any other cardiovascular problems
- has open wounds, infectious skin diseases or sores - infection can spread when surfaces touched come into contact with other people's skin
- has a fever of any type - as these conditions can get much worse from exposure to the steam
- under the age of 18

Steam rooms use heat as well as humidity, if you have any health problems or are in doubt whether you can use a steam room, you should consult your doctor before using the steam room.

Take care when using a steam room with the following tips:

- too much exposure may result in dizziness, nausea or fainting
- wait at least an hour after eating before you enter the steam room
- to reduce the risk of hyperthermia which can happen when you are extremely overheated, it is best to let your body cool down after excersizing before entering the steam room
- to avoid dehydration which can be a problem even in humid environments, drink plenty of water before and after using the steam room
- take a shower afterwards

The steam outlet pipe can become very hot even when a safety guard has been fitted, please ensure you do not touch or come into close contact with the outlet nozzle or guard as it could cause scalding.

What's in the kit?



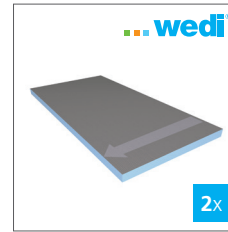
Fundo Primo tray
1200 x 1200 x 40mm



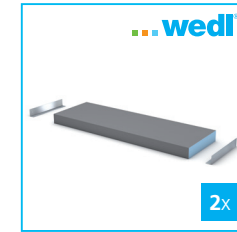
Fundo point drain
horizontal DN50



Fundo point drain
substructure element



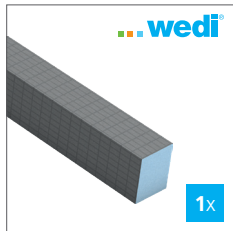
Fundo sloping board
600 x 1200 x 40/46mm



Sanoasa bench 4, cantilevered,
1200 x 380 x 80mm



Sanwell niche
internal dimension:
234 x 434 x 70mm



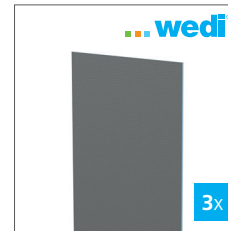
Fundo edge strip
1800 x 100 x 40mm



Vapor 85 building boards
2500 x 900 x 20mm



Vapor 85 building boards
2500 x 600 x 20mm



wedi building boards
2500 x 625 x 12.5mm



wedi Top Wall stone grey
2500 x 900 x 6mm, natural stone effect



Harvia steam generator
with control panel
HGX45 3KW



Glass door with frame
AU LUX 8x20

Based on your selections when placing the order, interchangeable components may be different:

- wedi Sanoasa bench 3 - wedi Sanoasa bench 1, 2 or 4
- wedi Sanwell niche 20/40 - wedi Sanwell niche 30/60
- wedi Top Wall, stone grey - wedi Top Wall concrete grey, carbon black or sahara beige

If you have ordered extra wedi Top components - they will be installed last, before the tiling of surrounding areas.

What's in the kit?



Joint reinforcement tape
25m, self-adhesive fibre mesh



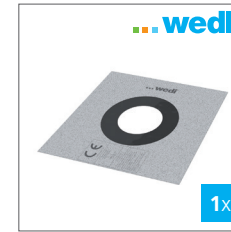
Sealing tape
50m roll, fleece



Sealing gaiters
fleece, 10-24mm
(for shower outlets)



Sealing gaiters
fleece, 50-75mm
(for lights)



Sealing gaiters
fleece, 90-125mm
(for the iBox)



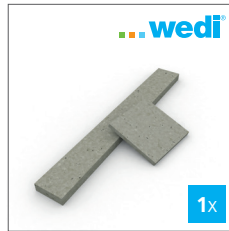
Sealing corners
inside, fleece
120 x 120 x 60mm



wedi 610 adhesive sealant
310ml tube*



wedi 620 sealant
290ml tube**



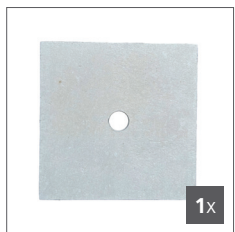
Fixings set
composite material, 14pcs



Washers
stainless steel Ø35mm, 100pcs

NOT INCLUDED

1. suitable heat resistant and vapour retardant Epoxy resin or silicone sealant for the steam outlet pipe
2. stainless steel, no.8 countersunk screws for use with washers
3. suitable epoxy based tile adhesive & grout
4. brassware



Promat heat plate
150 x 150 x 12mm



Lucedo down light
LED, IP65 rated

Installation guides are included in the packaging of each individual element.

Please note that wedi application guides are focused on installations in wet areas such as showers and bathrooms (610). Therefore it is very important to follow installation steps within this manual, to observe steam/vapour specific applications of wedi components (620). For detailed visual instructions, please refer to the individual wedi installation guides.

* the wedi 610 adhesive sealant is used to seal and bond wedi building boards joints in a single step as well as to create a waterproof adhesion between the wedi Top Wall and wedi Vapor or standard wedi building boards.

** the wedi 620 sealant is used in conjunction with the wedi Sealing tape to vapour seal wedi Vapor 85 building board joints - and in case of steam rooms, to vapour seal all wall/floor joints subjected to steam - such as board, niche and shower tray joints - as well as all fixings and penetrations through the wedi Vapor 85 building board in conjunction with wedi Sealing tapes, corners and gaiters.

Basics: wedi steam room design

Structure

The structure can be built from timber stud work.

Any niche or shelving is to be taken into account when building the structure.

The room must be minimum 2.1 metres high.

A min. 5% and max.10% gradient / slope must be incorporated into the ceiling structure so that condensation doesn't drip.

Tiling substrate (wedi boards)

There are two types of wedi boards provided in this kit.

A: wedi building boards for external / bathroom faced cladding

B: wedi Vapor 85 building boards for internal / steam room faced cladding

Both types of boards are 100% waterproof, directly tileable and have excellent thermal insulation properties.

Vapor 85 boards have a pre-integrated vapour barrier on one side (facing the steam area) making them ideal for use in high humidity environments.

All boards along with the wedi Top Wall should be prepped and holes cut where necessary to enable installation of the heat dispersion plate and niche as well as the light fittings and reinforcement plates.

Wall & floor joints and penetrations facing the steam area should be sealed with a suitable vapour sealant material before tiling.

Floor / Shower tray

Floor gradients should be designed in such way so that even condensation dripping from walls and the door would effortlessly flow into the drain.

All wedi Fundo shower floor elements are 100% waterproof and have the required gradient / slope integrated within.

Insulation

The proper insulation of a steam room is important in order to keep running costs low.

wedi Vapor 85 building boards have not only high insulation values but are also 100% waterproof and vapour retardant (SD 92) making them ideal for such purpose.



Subject to being installed according to our guidelines, wedi components within this kit are individually covered by our 10-year product quality guarantee.

Register your Steam Shower installation to activate your warranty on every component.

See the back page of this guide for details.

Bench / Seating

Seating should always be sloped towards the drain to avoid water pooling.

All wedi Sanoasa benches has a pre-integrated slope to comply such requirement.

Door

The door must open outwards and should not be fitted with a lock.

A door sill must not be installed and a minimum of 10mm clearance gap is required at the bottom for air intake.

The supplied door in this kit has an internal width of 0.8 metre and a height of 2 metres.

A wedi Fundo edge strip is provided for a level entrance into the room.

Sealing of joints & fixings

In order to ensure a sufficient vapour barrier is provided throughout, all internal / steam room faced wall & floor joints along with any penetrations & fixings through the Vapor 85 board should be sealed with wedi Sealing tapes, corners and gaiters fully embedded into wedi 620 sealant.

In order to protect them from moisture, all external / bathroom faced joints, along with any penetrations & fixings through the wedi building board should be sealed with wedi 610 adhesive sealant and reinforced with self-adhesive wedi Reinforcement tape.

wedi 610 is also used for bonding & sealing:

A: the Sanwell niche, Sanoasa bench & Fundo edge strip

B: wedi Top surfaces onto wedi XPS elements

For the mechanical fixing of boards to the timber structure, stainless steel wedi Washers & no.8 countersunk timber screws are required at a minimum fixing ratio of 5 per square metre.

Lighting

Lighting illuminates the steam & creates a soft ambient glow.

LED strips for under the bench or fibre optic ceiling lights could be great additions to create atmospheric lighting effects.

We recommend all light fittings to be no less than IP65 rated and resistant to oxidation as steam is very aggressive at oxidizing metal.

Two LED down lights are provided within the kit for installation on the ceiling.

Basics: wedi steam room design

Steam outletpipe location

The steam outlet pipe should be positioned in the bottom third of the steam room and must be fitted with a scald protector that is included with the steam generator.

The continuous temperature of the room must not exceed 70°C.

Fixing & heat dispersion plates

For areas that require additional reinforcement - such as for doors, brassware, handrails etc. - reinforcing plates should be used (in the kit: wedi Fixing plates).

In order to provide a suitable fixing point whilst also ensure that a smooth surface for tiling is maintained, wedi Fixing plates are glued into routed* areas of the wedi board with wedi 610 adhesive sealant, then sealed over with wedi Sealing tape fully embedded into wedi 620 sealant.

The heat dispersion plate is meant for use around the high temperature steam outlet pipe. A suitable heat resistant and vapour retardant epoxy resin or silicone sealant** should be used to seal between the heat dispersion plate and steam outlet pipe

*Routing to be done on site during installation.

**Not included in this kit.

Steam generator & heat up time

Only a cold water supply is required for the steam generator.

On average, the room should reach the desired temperature within 20-40 minutes.

Heat up times can vary depending on the choice of tiling / finish and ambient room temperature (i.e. it may take longer during winter months).

Control pad

The control pad included with the steam generator should be installed outside of the steam room.

Temperature and time settings should be set and adjusted prior to entering to ensure the room gets up to the desirable temperature and relaxation can begin immediately.

Tiles / wedi Top Line

Epoxy based tile adhesives and grouts should be used due to the high temperature and humidity.

When it comes to the choice of tiling, the thinner the better, as thin tiles will heat up quicker and therefore keep running costs lower.

Thick natural stone such as marble or granite will take much longer to heat up compared to thin ceramic or mosaic tiles.

We recommend using no thicker than 10mm tiles for maximum effect.

Recommended tile loads: up to 50kg/m² for the walls and 25kg/m² for the ceiling.

A wedi Top design surface is a great alternative to traditional tiles as it covers a larger surface area than most tiling and therefore significantly reduces grout lines making it not only much easier to maintain but also more hygienic to use in steam rooms.

Whether it be a wedi Top Wall or a preformed Top surface for the bench, niche or shower floor, they are simply bonded to the wedi XPS surfaces with wedi 610 adhesive sealant.

Equally suitable for bathrooms, showers and steam rooms, thanks to being only 6mm thick, design surfaces of the wedi Top Line will keep running costs down.



wedi EXPERTS

Are you interested in becoming a wedi Expert?
Scan the QR code and fill in the application form.



STRONG CONNECTION

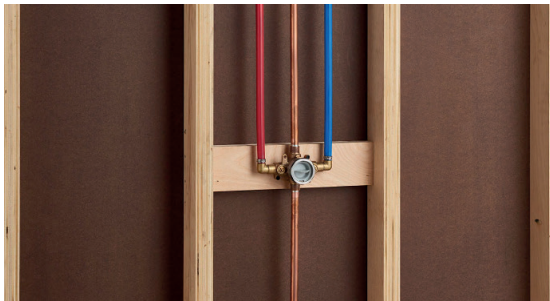
As part of the ARDEX family, wedi can also offer compatible adhesives and grouts for direct tiling without the need of additional waterproofing. Get in touch to find out more.

Installation steps

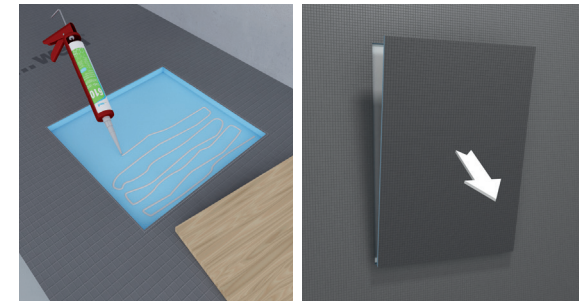
1 Construct the timber studwork walls and sloped ceiling structures as required. The position of the Sanwell niche should be carefully considered at this stage and a recess should be built into the studwork, providing sufficient support for this element.



2 Install the relevant first fix components such as plumbing and wiring where required for the shower head, shower controls, steam generator, temperature sensor, lighting & drainage. The manufacturer's guidelines for each component should be followed.



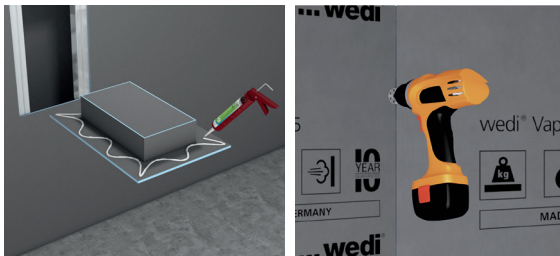
3 Prep the wedi boards and the Top Wall panel as required. Cut to size, puncture holes for the light fittings, water pipes and the steam outlet pipe. Rout out the boards where required for the Sanwell niche, lights, reinforcement and heat dispersion plates.



4 Ensuring that the light grey vapour barrier side is facing internally, mechanically fix wedi Vapor 85 boards to the studwork structure using no.8 countersunk* stainless steel timber screws & stainless steel wedi Washers at a minimum rate of 5 fixings per square metres**. Glue the Sanwell niche into the pre-routed wedi board with wedi 610 adhesive sealant.

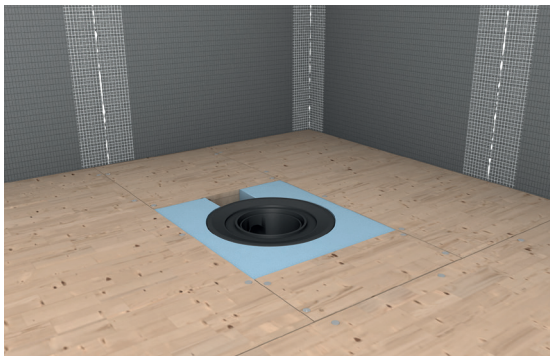
*No.8 stainless steel countersunk screws are not included in this kit

**An increased fixing ratio of 8 per square metres is required for large format tiles! The maximum load of tiles vertically is 50kgs per square metres.



5 Plumb in the drain unit and place into the required position, ensuring it is fully supported from underneath with the Fundo drain substructure element provided. In order for the drain body to perfectly align with the channel opening of the Fundo element, cut the drain substructure element as required.

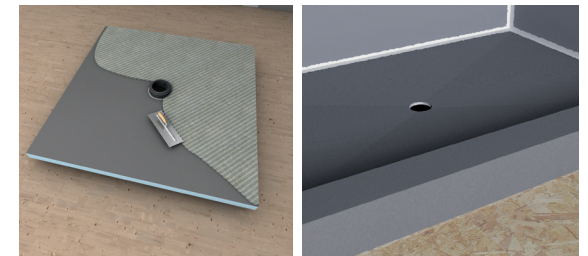
The top of the drain body should be flush with the level floor substrate, ready for installation of the Fundo shower element.

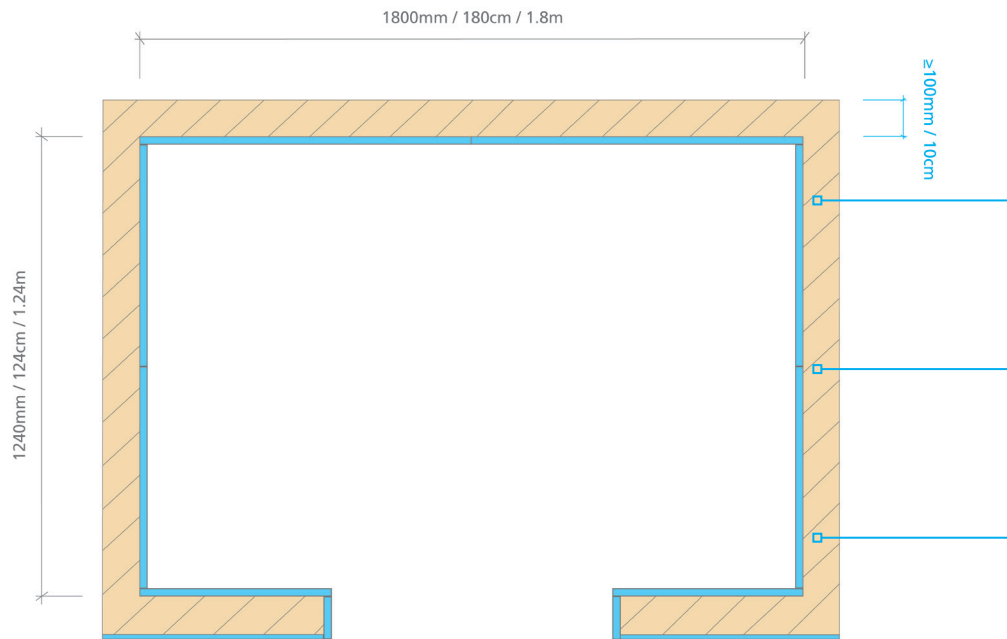


6 Bed the shower tray and sloping boards onto the level floor using a full notched trowel bed of a flexible cement-based tile adhesive. A 4-6mm full contact layer of tile adhesive is recommended. The tray and sloping boards should be weighed down (i.e. with bags of adhesive) until the tile adhesive is fully cured*.

Measure the doorway and cut the Fundo edge strip so that 2 pieces can be glued on top of one another for adequate height. Glue it in place with wedi 610 adhesive sealant, ensuring that its 100mm side is in contact with the floor.

*For the required curing time please refer to the manufacturer.





The installation is focused on stud frames, whether metal or timber, the method is exactly the same.

It is also possible to fix to blockwork, our technical department is available to discuss such applications - either email technical@wedi.co.uk or call our office on 0161 864 2336.

Max stud distance 600mm - 20mm thick wedi Vapor 85 building boards are for the cladding of the ceiling, interior walls and the doorway where the exposure to humidity is constantly high. There is enough board supplied to cut as suits, however to ensure that there are no unnecessary joints to seal, it is advised to fit as shown on the diagram to the left.

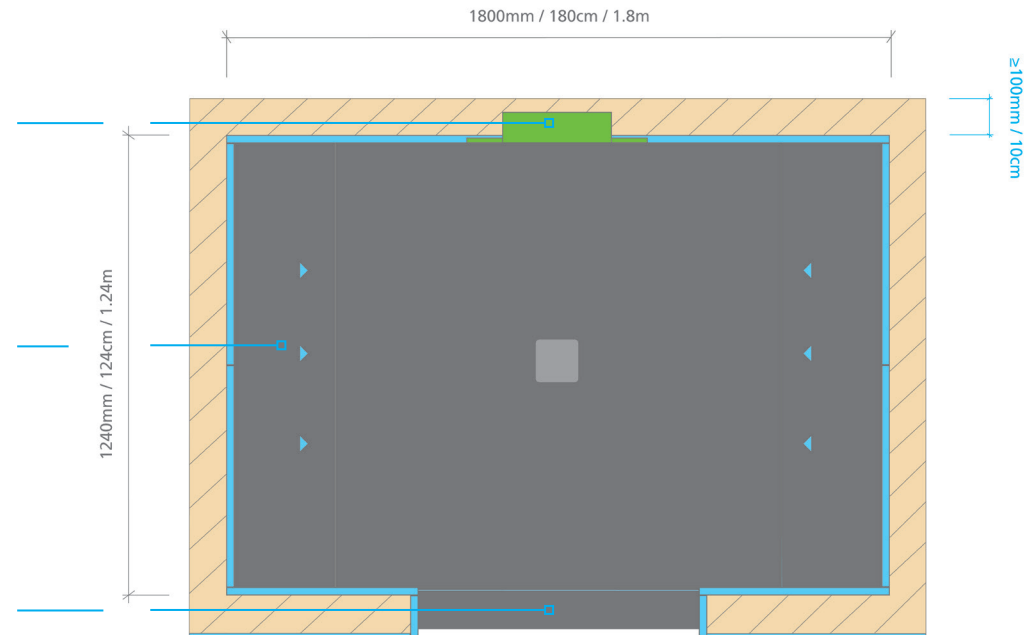
Max stud distance 400mm - 12.5mm thick wedi building boards are for the cladding of the outer, bathroom facing wall. As this kit is planned for enclosed installation, the number of boards included in this kit are adequate to cover the walls to either side of the door.

There must be an adequate depth of the stud work where the niche is to be installed. **A minimum of 100mm stud-depth is required here.**

Mark the thinner ends of the sloping boards - please note, there is only 6mm difference! Then measure 320mm from the thicker end and cut lengthwise - making the marked sides 280 x 1200mm. **Join the marked sides to either side of the centrally placed shower element to extend the tray and gradient to 1760mm (allowing for the already installed Vapor 85 boards).**

The door included is 2m high, but a minimum of 10mm gap is required underneath for air intake.

The supplied edge strip is necessary to create a curb in order to keep the moisture gathered on the floor inside of the enclosure. As it is 1800mm long, it needs to be cut, making sure that there are at least 2 pieces of the same length to fill the doorway, making the curb 80mm high. Bond them on top of each other and down to the floor ensuring that the wider side faces the floor.



Installation steps

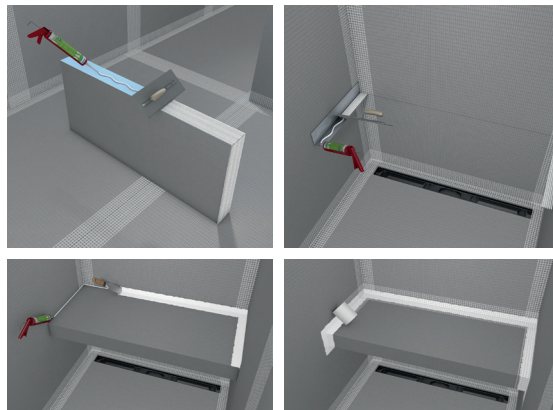
7 All structural joints, fixings & penetrations to the wall and floor boards (i.e. screws & washers, reinforcing plates, etc.) as well as the entire niche (surface & joints) should now be sealed with wedi 620 sealant & wedi Sealing tape and corners. The ceiling light fittings, should be sealed with wedi 620 sealant & wedi Sealing gaiters.

For sealing the heat resistant plate to the steam outlet pipe a suitably heat resistant and vapour retardant epoxy resin or silicone sealant* material is required.

*The required epoxy resin or silicone sealant is not included in this kit.



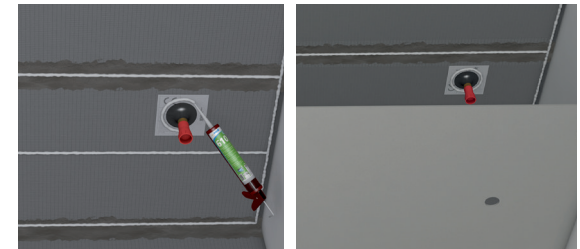
8 Once the sealants are dry to touch (approx. 4hrs), glue the Sanoasa benches in place. Seal all joints with wedi 610 adhesive sealant and reinforce them with the self-adhesive wedi Joint reinforcement tape.



9 Glue the prepared wedi Top Wall to the sloped ceiling with wedi 610 adhesive sealant following the pattern shown in the Top Wall installation guide. The ceiling have to be supported for a minimum of 12 hours for until the adhesive sealant fully cures.

Once adhesives are FULLY cured (approx. 12hrs), install your chosen finish (tiles or wedi Top surfaces) to the walls, niche, bench & shower tray. Tiling should be done with an epoxy based tile adhesive and grouted with an epoxy based grout*.

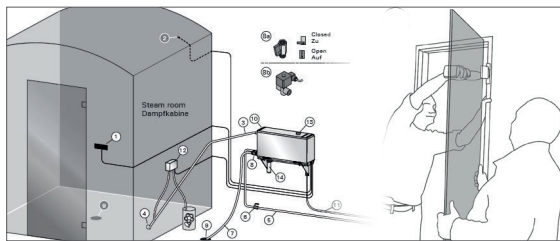
*The required epoxy based adhesive & grout is not included in this kit.



10 Fix shower door, lighting, steam outlet, shower head and digital controls as per the manufacturer's installation guidelines provided for each component.

Door installation on YouTube: <https://tinyurl.com/2f3e534r>

Steam Generator installation on YouTube: <https://tinyurl.com/v548sw>



11 Connect steam generator to water & electrical supply in line with the manufacturer's installation guidelines.

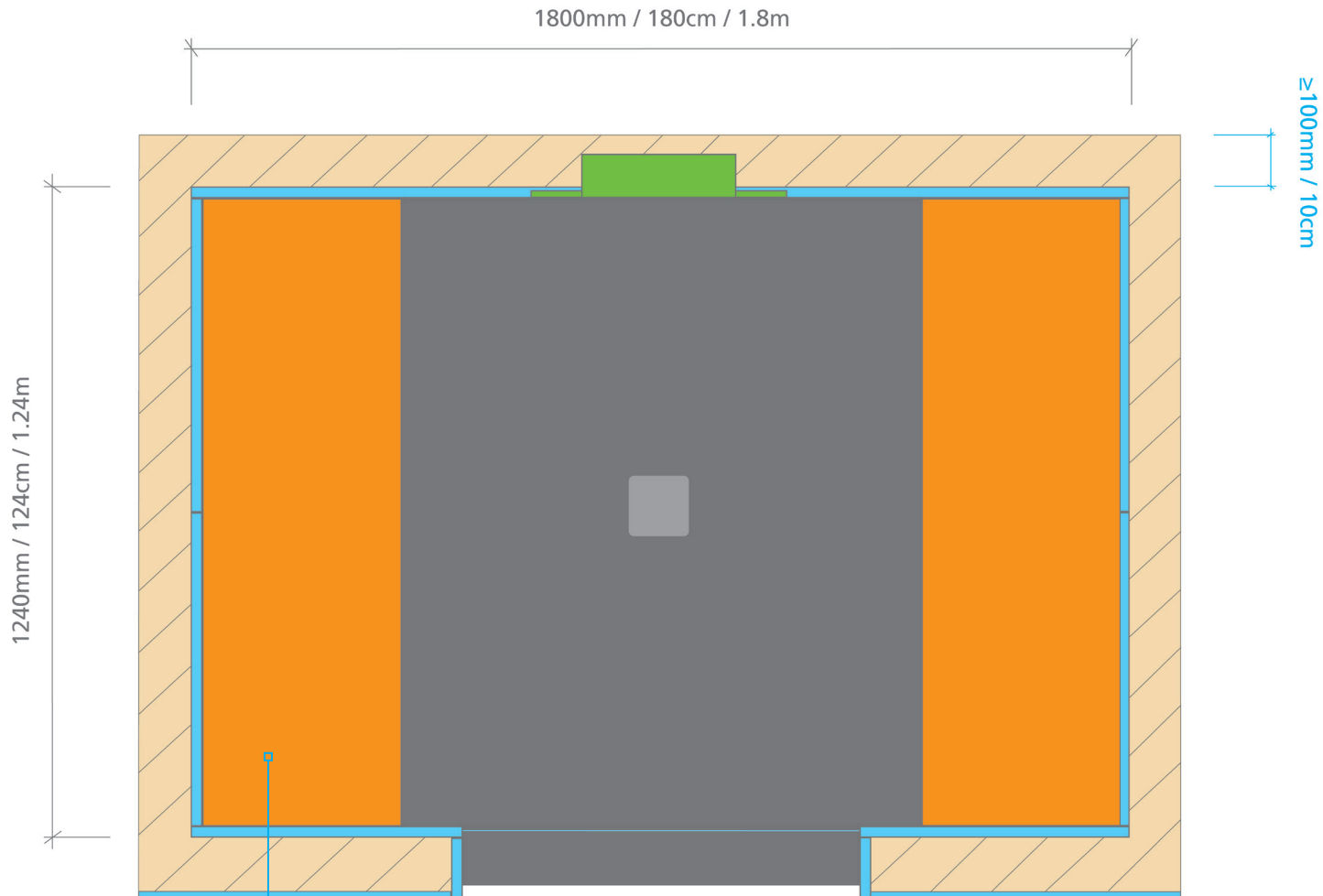


wedi EXPERTS

DISCLAIMER

These instructions are for use as a guide only and may not accurately reflect all possible methods of installation. It is the responsibility of the installer to ensure all individual components are installed according to the manufacturer's guidelines, and comply with the requirements set out by the relevant building regulations and british standards.

Should you need expert advice relating to this installation, please email technical@wedi.co.uk or call our offices on 0161 864 2336 and ask for the technical department.



After sealing all joints, install the two floating benches and finally, the seamless surface for the ceiling.

Do not install the steam inlet pipe where the steam spray may come into direct contact with the user. For example this should not be positioned in close proximity of a bench / seat, by the entrance, or in any location where it may presents a scald hazard.

There is a 10m long steam inlet pipe for the steam generator, allowing it to be fitted in a suitable location such as in the loft above, on the side of the outer wall or in a cupboard built for it.

Ensure that there is adequate clearance around it for safety and for servicing, as outlined in the installation manual enclosed in its packaging. If installed on one of the outer walls, please use a Plywood or an OSB board for cladding the outer wall to mechanically fix the steam generator to.



WARRANTY REGISTRATION

Register your installation: please provide the following information in order for your warranty to be activated on every component.

- ✓ Date of completion
- ✓ Name of the Installer (person's & company's)
- ✓ Project name / reference
- ✓ Site address
- ✓ Full contact details (email, phone number & address)
- ✓ Place & date of purchase (including order number)

EMAIL: info@wedi.co.uk

Warranty terms are subject to registration and must be activated immediately upon completion of the installation.



All reasonable care has been taken in the preparation of this brochure, all information, statistics and illustrations are intended for guidance only. All details are nominal, wedi Systems UK may modify or change the information, products or specifications in future. All rights reserved. Copyright in this publication belongs to wedi Systems UK Ltd. and such copyright may not be used, sold, copied or reproduced in whole or part in any manner in any media to any person without prior consent. Information within is correct at the date of printing in November 2023.



wedi Systems (UK) Ltd

Unit 4 Mercury Park

Mercury Way

Trafford Park

M41 7LY

Phone: 0161 864 2336

Email: info@wedi.co.uk

